

Capital Asset Advisory Committee  
2018 Capital Improvement Program  
Financial Status September 30, 2020

October 1, 2020

# 2018 CAPITAL IMPROVEMENT PROGRAM – FINANCIAL STATUS 9/30/2020

## Revenue

---

\$ (326,490,000)	First Bond Issuance
\$ (50,165,349)	Premium on First Bond Issuance
\$ (11,826,161)	Interest Through August 31
\$ (41,800,962)	Fiscal Years 2020 and 2021 Capital Transfers (COP Principal & Interest Payments Removed)
<b>\$ (430,282,472)</b>	

## Expenses

---

### As of September 30, 2020

\$ 205,610,147	Total Expended - All projects
\$ 126,854,633	Total Encumbered - All projects

### Charter Projects

\$ 35,688,247	Total Expended - Charter
\$ 7,168,939	Total Encumbered - Charter

\$ 7,848,885 Contracts on October 1 BOE Agenda for Approval

### As of August 31, 2020

\$ 182,385,588	Total Expended - All projects
\$ 112,369,760	Total Encumbered - All projects

\$ 33,561,393	Total Expended - Charter
\$ 5,923,666	Total Encumbered - Charter

# 2018 CAPITAL IMPROVEMENT PROGRAM – FINANCIAL STATUS 9/30/2020

## Funding Breakdown 2018 Capital Improvement Program

\$	326,490,000	First Bond Issuance
\$	50,165,349	Premium on First Bond Issuance
\$	11,826,161	Bond Interest Through August 31, 2020
\$	41,800,962	FY 2020 & 2021 Capital Transfers
\$	<b>430,282,472</b>	<b>Funds to Date</b>
\$	240,510,000	Estimated Second Bond Issuance
	TBD*	Premium on Second Bond Issuance
	TBD*	Future Bond Interest Earnings
\$	83,601,924	4 Years Capital Transfer
	TBD*	Interest on Capital Transfer
\$	<b>754,394,396</b>	<b>Preliminary Total</b>

TBD\* To Be Determined

# 2018 CAPITAL IMPROVEMENT PROGRAM – FINANCIAL STATUS 9/30/2020

## September 2020 Bid Results

School	Type	Bid Amount	Over/(Under)
Wayne Carle Middle School	A/R	\$ 3,676,400	\$ (444,552)
Parmalee Elementary School	A/R	\$ 3,186,500	\$ 478,530
		<hr/>	
		\$ 6,862,900	\$ 33,978

E&FR Efficiency & Ready, A/R Addition, Renovation, DW Districtwide

## Work to be Priced October 2020

### Additions

- Foster Elementary School
- Lumberg Elementary School (GMP)

# 2018 CAPITAL IMPROVEMENT PROGRAM – FINANCIAL STATUS 9/30/2020

## Work in Progress

Columbine HS - Aux Gym, Exterior Entry  
Conifer HS - Aux Gym  
Golden HS - Artificial Turf & Track  
Green Mountain HS - Aux Gym, All-Weather Track  
Jefferson HS - Addition/Renovation  
Kendrick Lakes Replacement  
Bell MS Addition  
Manning K8 Addition  
Parmalee ES Addition/Renovation  
Warren Tech South  
Wayne Carle MS Addition  
LED Replacement - Districtwide  
Security Cameras - Districtwide

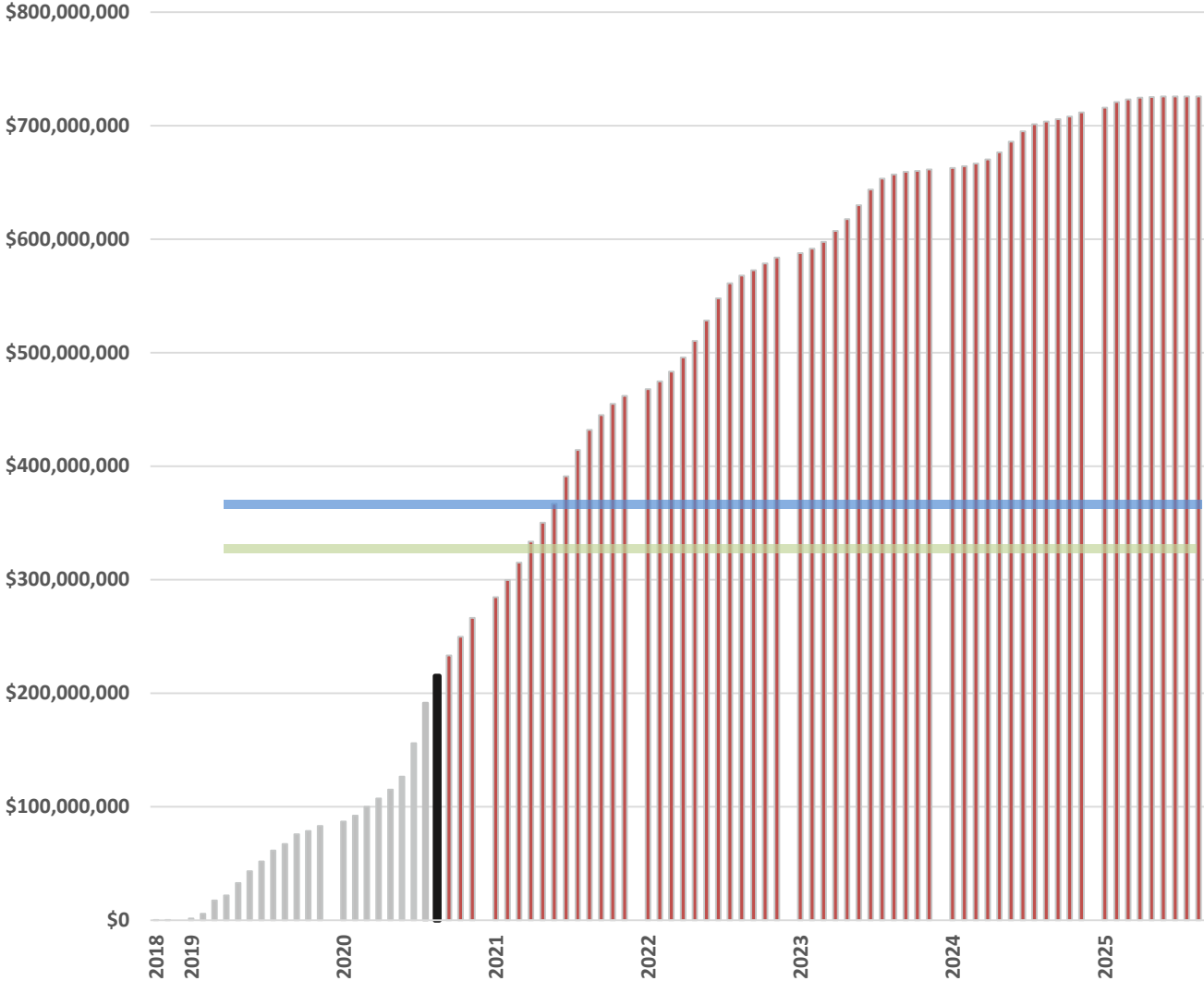
# 2018 CAPITAL IMPROVEMENT PROGRAM – FINANCIAL STATUS 9/30/2020

## In Design

D'Evelyn 7-12 Addition/Renovation  
Evergreen HS Renovation  
Evergreen MS Addition/Renovation  
Marshdale ES Replacement  
Pomona HS Addition/Renovation  
Powderhorn ES Addition/Renovation  
Prospect Valley ES Replacement  
Ralston Valley HS Addition/Renovation  
Standley Lake HS Addition/Renovation  
21 Efficiency & Future Ready Projects  
Playground Projects 10 Sites  
Mechanical Projects 6 Sites  
Flooring Replacements 6 Sites  
Artificial Turf & All-Weather Tracks 4 Sites  
LED Replacements Districtwide  
Furniture, Fixtures & Equipment (FF&E) 14 Sites

# 2018 CAPITAL IMPROVEMENT PROGRAM – FINANCIAL STATUS 9/30/2020

## Cash Flow



# 2018 CAPITAL IMPROVEMENT PROGRAM – FINANCIAL STATUS 9/30/2020

Site	Status								
	Consultant Selection	Contractor Selection	Design Advisory Group	Schematic Design	Design Development	Construction Documents	Pricing	Construction	Percent Complete
<b>Started 1Q2019 PROJECTS</b>									
<b>Addition/Remodel, Replacement</b>									
Alameda Intl - Addition/Remodel	√	√	√	√	√	√	√	√	10%
Arvada HS - Addition/Remodel	√	√	√	√	√	√	√	√	98%
Columbine HS Addition/Remodel	√	√	√	√	√	√	√	√	75%
Green Mountain HS Addition/Remodel	√	√	√	√	√	√	√	√	75%
Kendrick Lakes ES Replacement	√	√	√	√	√	√	√	√	60%
Three Creeks K-8 Addition	√	√	√	√	√	√	√	√	100%
Wilmot ES Addition	√	√	√	√	√	√	√	√	95%
<b>Track &amp; Artificial Turf Fields</b>									
Arvada HS	√	√	√	√	√	√	√	√	100%
Chatfield HS	√	√	√	√	√	√	√	√	100%
Conifer HS	√	√	√	√	√	√	√	√	100%
Dakota Ridge HS	√	√	√	√	√	√	√	√	100%
Evergreen HS	√	√	√	√	√	√	√	√	100%
Lakewood HS	√	√	√	√	√	√	√	√	100%
Ralston Valley HS	√	√	√	√	√	√	√	√	100%
West Jefferson MS	√	√	√	√	√	√	√	√	100%
<b>Paving Projects</b>									
Devinny ES	√	√	√	√	√	√	√	√	100%
Evergreen MS	√	√	√	√	√	√	√	√	100%
Hackberry Hill ES	√	√	√	√	√	√	√	√	100%
Maple Grove ES	√	√	√	√	√	√	√	√	100%
Parmalee ES	√	√	√	√	√	√	√	√	100%
Peck ES	√	√	√	√	√	√	√	√	100%



# 2018 CAPITAL IMPROVEMENT PROGRAM – FINANCIAL STATUS 9/30/2020

Site	Status								
	Consultant Selection	Contractor Selection	Design Advisory Group	Schematic Design	Design Development	Construction Documents	Pricing	Construction	Percent Complete
<b>Started 1Q2019 PROJECTS</b>									
<b>Playground Projects</b>									
Belmar ES	√	√	√	√	√	√	√	√	100%
Columbine Hills ES	√	√	√	√	√	√	√	√	100%
Eiber ES	√	√	√	√	√	√	√	√	100%
Free Horizon Montessori	√	√	√	√	√	√	√	√	100%
Patterson ES	√	√	√	√	√	√	√	√	100%
Ralston ES	√	√	√	√	√	√	√	√	100%
Welchester ES	√	√	√	√	√	√	√	√	100%
Wilmore-Davis ES	√	√	√	√	√	√	√	√	100%
<b>Roofing</b>									
Lakewood HS	√	√	√	√	√	√	√	√	100%
Ralston Valley HS	√	√	√	√	√	√	√	√	100%
Eiber ES	√	√	√	√	√	√	√	√	100%
Green Gables ES	√	√	√	√	√	√	√	√	100%
Wilmot ES	√	√	√	√	√	√	√	√	100%
<b>Security</b>									
IT Cameras - Districtwide	√	√	√	√	√	√			50%
Security Locks -Districtwide	√	√	√	√	√	√	√	√	98%
Site Lighting - 6 sites	√	√	√	√	√	√	√	√	100%
Fire Alarm Upgrades	√	√	√	√	√	√	√	√	100%
Security Glazing Replacement	√	√	√	√	√	√	√	√	50%
<b>Flooring Replacement</b>									
8 ES Sites	√	√	√	√	√	√	√	√	100%
<b>Fixtures, Furnishings &amp; Equipment (FF&amp;E)</b>									
Arvada K8	√	√	√	√	√	√	√	√	100%
West Jefferson MS	√	√	√	√	√	√	√	√	100%

# 2018 CAPITAL IMPROVEMENT PROGRAM – FINANCIAL STATUS 9/30/2020

Site	Status								
	Consultant Selection	Contractor Selection	Design Advisory Group	Schematic Design	Design Development	Construction Documents	Pricing	Construction	Percent Complete
<b>Started 3Q2019 PROJECTS</b>									
<b>Playground Projects</b>									
Allendale ES	√	√	√	√	√	√	√	√	100%
Dutch Creek ES	√	√	√	√	√	√	√	√	100%
Fletcher Miller Special	√	√	√	√	√	√	√	√	100%
Kendallvue ES	√	√	√	√	√	√	√	√	100%
Sheridan Green ES	√	√	√	√	√	√	√	√	100%
Stony Creek ES	√	√	√	√	√	√	√	√	100%
Stott ES	√	√	√	√	√	√	√	√	100%
Vanderhoof ES	√	√	√	√	√	√	√	√	100%
Westridge ES	√	√	√	√	√	√	√	√	100%
<b>Roofing</b>									
Carmody MS	√	√	√	√	√	√	√	√	100%
Evergreen HS	√	√	√	√	√	√	√	√	100%
Green Mountain ES	√	√	√	√	√	√	√	√	100%
Kullerstrand ES	√	√	√	√	√	√	√	√	100%
Lasley ES	√	√	√	√	√	√	√	√	100%
Little ES	√	√	√	√	√	√	√	√	100%
Parr ES	√	√	√	√	√	√	√	√	100%
Patterson ES	√	√	√	√	√	√	√	√	100%
Swanson ES	√	√	√	√	√	√	√	√	100%
Thompson ES	√	√	√	√	√	√	√	√	100%
<b>Security</b>									
IT Cameras - Districtwide	√		√	√	√	√	√	√	60%
Security Locks -Districtwide	√		√	√	√	√	√	√	98%
Security Glazing Replacement	√		√	√	√	√	√	√	75%
<b>Flooring Replacement</b>									
Flooring Replacement - 8 Sites	√	√	√	√	√	√	√	√	100%

# 2018 CAPITAL IMPROVEMENT PROGRAM – FINANCIAL STATUS 9/30/2020

Site	Status								
	Consultant Selection	Contractor Selection	Design Advisory Group	Schematic Design	Design Development	Construction Documents	Pricing	Construction	Percent Complete
<b>Started 1Q2020 PROJECTS</b>									
<b>Addition/Remodel, Replacement or New</b>									
Conifer HS Addition/Remodel	√	√	√	√	√	√	√	√	70%
Jefferson Jr/Sr HS Addition/Remodel	√	√	√	√	√	√	√		
Bell MS Addition	√	√	√	√	√	√	√		
Lumberg ES Addition/Remodel	√	√	√	√	√	√			
Manning MS Addition	√	√	√	√	√	√	√	√	
Parmalee ES Addition/Remodel	√	√	√	√	√	√	√		
South Warren Tech Facility	√	√	√	√	√	√	√		
Trailblazer Stadium	√	√	√	√	√	√	√	√	90%
Wayne Carle MS Addition	√	√	√	√	√	√	√		
<b>Track &amp; Artificial Turf Fields</b>									
Arvada West HS Track	√	√	√	√	√	√	√	√	100%
Columbine HS	√	√	√	√	√	√	√	√	100%
Golden HS Track	√	√	√	√	√	√	√	√	50%
Green Mountain HS	√	√	√	√	√	√	√	√	75%
Pomona HS	√	√	√	√	√	√	√	√	100%
Standley Lake HS	√	√	√	√	√	√	√	√	90%
<b>Paving Projects</b>									
Columbine Hills ES	√	√	√	√	√	√	√	√	100%
Everitt MS	√	√	√	√	√	√	√	√	100%
Lawrence ES	√	√	√	√	√	√	√	√	100%
Mitchell ES	√	√	√	√	√	√	√	√	100%
Ryan ES	√	√	√	√	√	√	√	√	100%
Shelton ES	√	√	√	√	√	√	√	√	100%

# 2018 CAPITAL IMPROVEMENT PROGRAM – FINANCIAL STATUS 9/30/2020

Site	Status								
	Consultant Selection	Contractor Selection	Design Advisory Group	Schematic Design	Design Development	Construction Documents	Pricing	Construction	Percent Complete
<b>Started 4Q2019 PROJECTS</b>									
<b>Efficiency &amp; Future Ready</b>									
Adams ES	√	√	√	√	√	√	√	√	100%
Arvada K-8	√	√	√	√	√	√	√	√	99%
Belmar ES	√	√	√	√	√	√	√	√	100%
Brady Option	√		√	√	√				
Columbine Hills ES	√	√	√	√	√	√	√	√	100%
Coronado ES	√	√	√	√	√	√	√	√	100%
Dutch Creek ES	√	√	√	√	√	√	√	√	100%
Eiber ES	√	√	√	√	√	√	√	√	100%
Foothills ES	√	√	√	√	√	√	√	√	100%
Fremont ES	√	√	√	√	√	√	√	√	99%
Green Gables ES	√	√	√	√	√	√	√	√	100%
Hackberry Hill ES	√	√	√	√	√	√	√	√	100%
Hutchinson ES	√	√	√	√	√	√	√	√	100%
Lukas ES	√	√	√	√	√	√	√	√	100%
Ralston ES	√	√	√	√	√	√	√	√	100%
Semper ES	√	√	√	√	√	√	√	√	100%
Stober ES	√	√	√	√	√	√	√	√	80%
Vivian ES	√	√	√	√	√	√	√	√	97%
Welchester ES	√	√	√	√	√	√	√	√	97%
Witt ES	√	√	√	√	√	√	√	√	100%
<b>Mechanical Projects</b>									
Patterson ES	√	√	√	√	√	√	√	√	100%
Ryan ES	√	√	√	√	√	√	√	√	100%
Stott ES	√	√	√	√	√	√	√	√	100%
Westridge ES	√	√	√	√	√	√	√	√	100%

# 2018 CAPITAL IMPROVEMENT PROGRAM – FINANCIAL STATUS 9/30/2020

Site	Status								
	Consultant Selection	Contractor Selection	Design Advisory Group	Schematic Design	Design Development	Construction Documents	Pricing	Construction	Percent Complete
<b>1Q2020 PROJECTS</b>									
<b>Started 1Q2020 Fixtures, Furnishings &amp; Equipment (FF&amp;E)</b>									
Arvada HS			√	√	√	√	√	√	100%
Columbine HS Phase I			√	√	√	√	√	√	100%
Green Mountain HS Phase I			√	√	√	√	√	√	100%
Conifer HS Phase I			√	√	√	√	√	√	100%
Adams ES			√	√	√	√	√	√	100%
Belmar ES			√	√	√	√	√	√	100%
Coronado ES			√	√	√	√	√	√	95%
Dutch Creek ES			√	√	√	√	√	√	100%
Eiber ES			√	√	√	√	√	√	25%
Foothills ES			√	√	√	√	√	√	90%
Fremont ES			√	√	√	√	√	√	50%
Green Gables ES			√	√	√	√	√	√	100%
Hutchinson ES			√	√	√	√	√	√	100%
Lukas ES			√	√	√	√	√	√	100%
Stober ES			√	√	√	√	√	√	100%
Welchester ES			√	√	√	√	√	√	100%
Witt ES			√	√	√	√	√	√	100%
Kendrick Lakes ES			√	√	√	√	√		
Three Creeks K-8			√	√	√	√	√	√	100%
Wilmot ES			√	√	√	√	√	√	75%

# 2018 CAPITAL IMPROVEMENT PROGRAM – FINANCIAL STATUS 9/30/2020

Site	Status								
	Debt Reduction	Consultant Selection	Contractor Selection	Schematic Design	Design Development	Construction Documents	Pricing	Construction	Percent Complete
<b>Charter School Projects</b>									
Jefferson Academy HS								√	100%
Jefferson Academy ES/MS	Funds to Jefferson Academy HS Project								
Lincoln Academy		√	√	√	√	√	√	√	100%
Excel Academy		√	√	√	√	√	√	√	1%
Addenbrooke		√	√	√	√	√	√	√	80%
Collegiate Academy		√	√	√	√	√	√	√	85%
Doral									
Great Work Montessori									
Compass Montessori Golden	√								100%
Compass Montessori Wheat Ridge	√	√	√	√	√	√	√	√	100%
Montessori Peaks									
Rocky Mountain Academy of Evergreen	√								100%
Rocky Mountain Deaf School		√	√	√	√	√	√	√	90%
Woodrow Wilson Academy	√								100%
Mountain Phoenix		√	√	√	√	√	√	√	10%
Two Roads	√								100%
New America	√								100%

# 2018 CAPITAL IMPROVEMENT PROGRAM – FINANCIAL STATUS 9/30/2020

Site	Status								
	Consultant Selection	Contractor Selection	Design Advisory Group	Schematic Design	Design Development	Construction Documents	Pricing	Construction	Percent Complete
<b>Started 3Q2020 PROJECTS</b>									
<b>Addition/Remodel, Replacement or New</b>									
D'Evelyn 6-12 Addition/Renovation	√		√						
Evergreen MS Addition/Renovation	√		√						
Pomona HS Additon/Renovation	√		√	√	√				
Ralston Valley HS Addition/Renovation	√		√						
Standley Lake Addition/Renovation	√		√						
Marshdale ES Replacement	√		√						
Powderhorn ES Addition/Renovation	√		√						
Prospect Valley ES Replacement	√		√						
<b>Track &amp; Artificial Turf Fields</b>									
Alameda International 7-12 Track/Field	√								
D'Evelyn 6-12 Track / Field	√								
Jefferson HS Track / Field	√								
Wheat Ridge HS Track	√								
<b>Paving Projects</b>									
Ken Caryl MS	√								
Red Rocks ES	√								
West Jefferson ES	√								
<b>Mechanical Projects</b>									
Edgewater ES	√								
Elk Creek ES	√								
Kyffin ES	√								
Peck ES	√								
Secrest ES	√								
Thomson ES	√								

# 2018 CAPITAL IMPROVEMENT PROGRAM – FINANCIAL STATUS 9/30/2020

Site	Status								
	Consultant Selection	Contractor Selection	Design Advisory Group	Schematic Design	Design Development	Construction Documents	Pricing	Construction	Percent Complete
<b>Started 4Q2020 PROJECTS</b>									
<b>Playground Projects</b>									
Warder ES	√								
Elk Creek ES	√								
Secrest ES	√								
Kyffin ES	√								
Thomson ES	√								
Shaffer ES	√								
Red Rocks ES	√								
Westgate ES	√								
Peck ES	√								
Stevens ES	√								
<b>Roofing</b>									
Emory ES	√								
Stevens ES	√								
Westgate ES	√								
<b>LED Replacement</b>									
LED Replacement-11 Sites	√								
<b>Flooring Replacement</b>									
Flooring Replacement - 6 Sites	√								



# 2018 CAPITAL IMPROVEMENT PROGRAM – FINANCIAL STATUS 9/30/2020

Site	Status								
	Consultant Selection	Contractor Selection	Design Advisory Group	Schematic Design	Design Development	Construction Documents	Pricing	Construction	Percent Complete
<b>Started 4Q2020 PROJECTS</b>									
<b>Efficiency &amp; Future Ready</b>									
Chatfield HS Renovation	√								
Dakota Ridge Renovation	√								
Evergreen HS Renovation	√								
Carmody MS Renovation	√								
Everitt MS Renovation	√								
Allendale ES Renovation	√								
Deane ES Renovation	√								
Dennison ES Renovation	√								
Devinny ES Renovation	√								
Fitzmorris ES Renovation	√								
Kullerstrand ES Renovation	√								
Kyffin ES Renovation	√								
Lasley ES Renovation	√								
Lawrence ES Renovation	√								
Maple Grove ES Renovation	√								
Patterson ES Renovation	√								
Ryan ES Renovation	√								
Sheridan Green ES Renovation	√								
Stott ES Renovation	√								
Vanderhoof ES Renovation	√								
Westridge ES Renovation	√								

# 2018 CAPITAL IMPROVEMENT PROGRAM – FINANCIAL STATUS 9/30/2020

Site	Status								
	Consultant Selection	Contractor Selection	Design Advisory Group	Schematic Design	Design Development	Construction Documents	Pricing	Construction	Percent Complete
<b>Started 4Q2020 PROJECTS</b>									
<b>Fixtures, Furnishings &amp; Equipment (FF&amp;E)</b>									
Alameda HS									
Columbine HS - Phase II		√	√	√	√				
Conifer HS		√	√	√	√	√	√		
Green Mountain HS - Phase II		√	√	√	√	√	√		
Jefferson Jr/Sr									
Pomona HS									
Bell MS									
Everitt MS									
Manning School									
Wayne Carle MS									
Dennison ES									
Parmalee ES									
Sheridan Green ES									
Warren Tech South									



# CAAC Design and Construction Update

10-1-2020





# Wilmot ES – Addition DLR – CMGC Himmelman

Construction  
10/12/20



Construction  
10/13/20

# Trailblazer Locker Room & Press Box Mellin & Assoc. – WE O’Neal





# Arvada HS - Addition HCM – CMGC Saunders

Construction  
10/16/20



2020 HS Field Improvements  
Green Mountain HS  
HCM – CMGC ECI

Construction  
10-17-20





2020 HS Field Improvements  
Golden HS  
HCM – CMGC ECI

Construction  
11-03-20





# Kendrick Lakes ES – Replacement Larson Incitti – GC Roche

Construction  
2021  
Completion



# DW LED – 7 complete 11 to go Ackerman – CMGC Weifield

Construction  
3/31/21



1. Columbine Hills ES
2. Deane ES
3. Devanny ES
4. Dennison ES
5. Fitzmorris ES
6. Kullerstrand ES
7. Lasley ES
8. Maple Grove ES
9. Patterson International
10. Peck ES
11. Powderhorn ES
12. Ryan ES
13. Secret ES
14. Sheridan Green ES
15. Stott ES
16. Vanderhoof ES
17. Westgate ES
18. Westridge ES

# Conifer HS – Addition Cannon – CMGC FCI

Construction





# Alameda HS – Addition WOLD – CMGC Phipps

## Construction





# Alameda HS – Addition WOLD – CMGC Phipps

Construction



# Green Mountain HS – Addition MOA – CMGC GE Johnson

Construction





# Columbine HS – Addition EIDOS – CMGC Swinerton

Construction



# Manning Opt – 1 Story – 7 Classroom Addition + 2 Alts AMD – Fransen Pittman

Construction  
Bid

\$5,159,167

On Budget





# CTE South – New Building + all alts HCM – JHL

Aviation Hanger funded outside of bond additional \$1,370,000



Construction  
Bid  
\$7,847,083

Budget  
\$8,059,384

\$212,301  
Below



# Bell MS – 1 Story, 4 Classroom Addition Eidos – Golden Triangle (all alternates)

Construction  
Bid  
\$5,154,500

Budget  
\$5,512,272

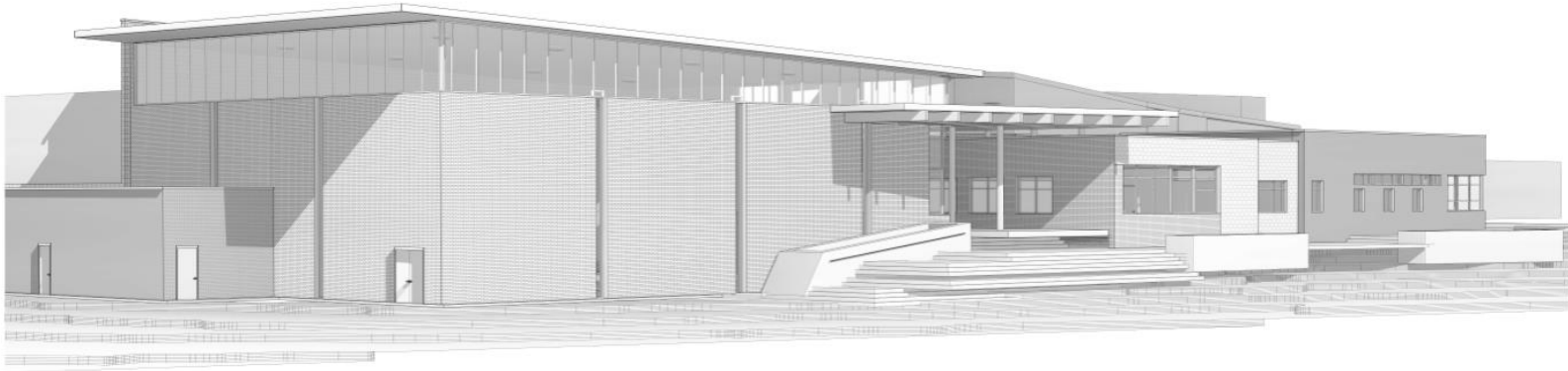
\$357,772  
Below



# Jefferson HS – Aux Gym Addition MOA – Haselden

Construction  
GMP  
\$10,078,359

On Budget





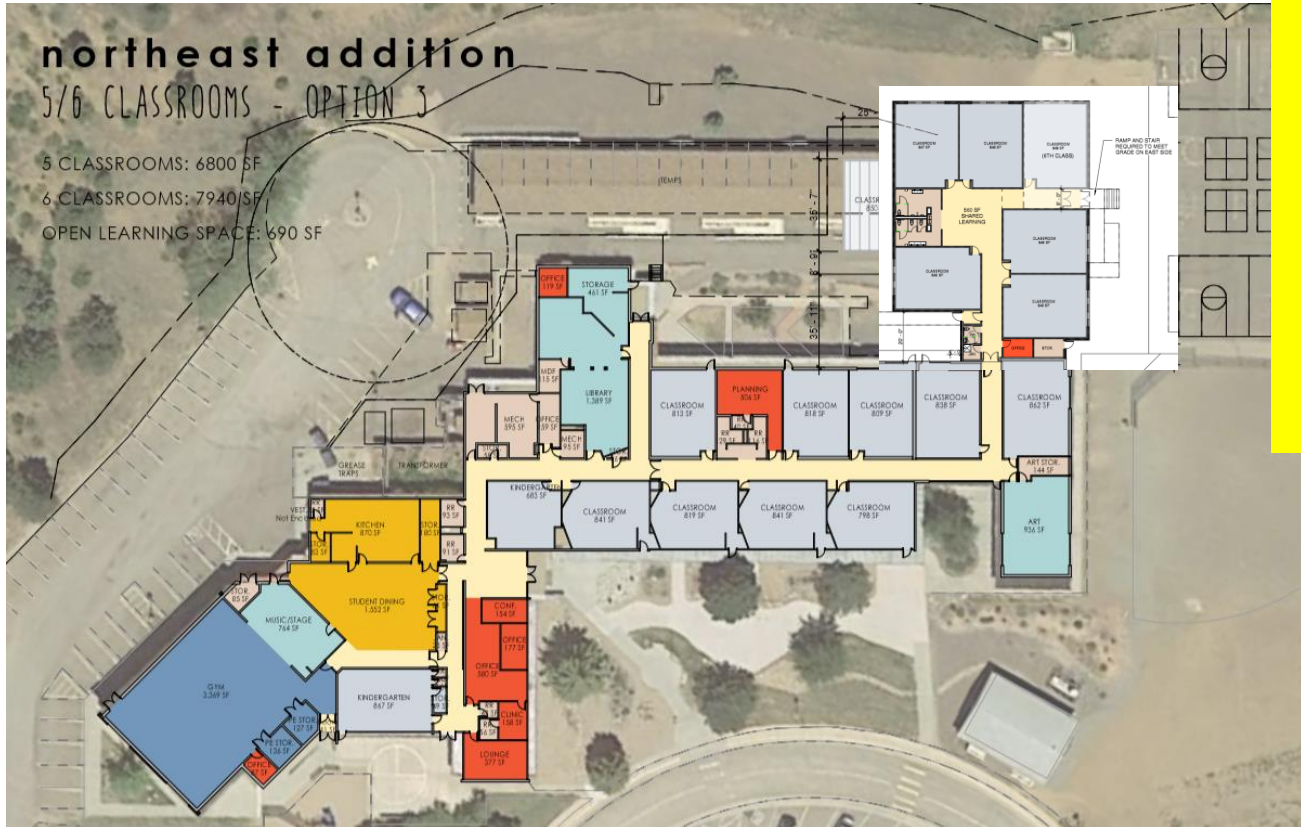
# Parmalee ES – 1 Story – 6 Classroom Addition + 2 Alts OZ – Saunders

Construction

Bid  
\$3,193,800

Budget \$2,770,070

\$423,730  
Over



Wayne Carle – 2 Story –  
8 Classroom Addition  
RB+B – Contractor TBD

Construction

Bid  
\$3,676,400

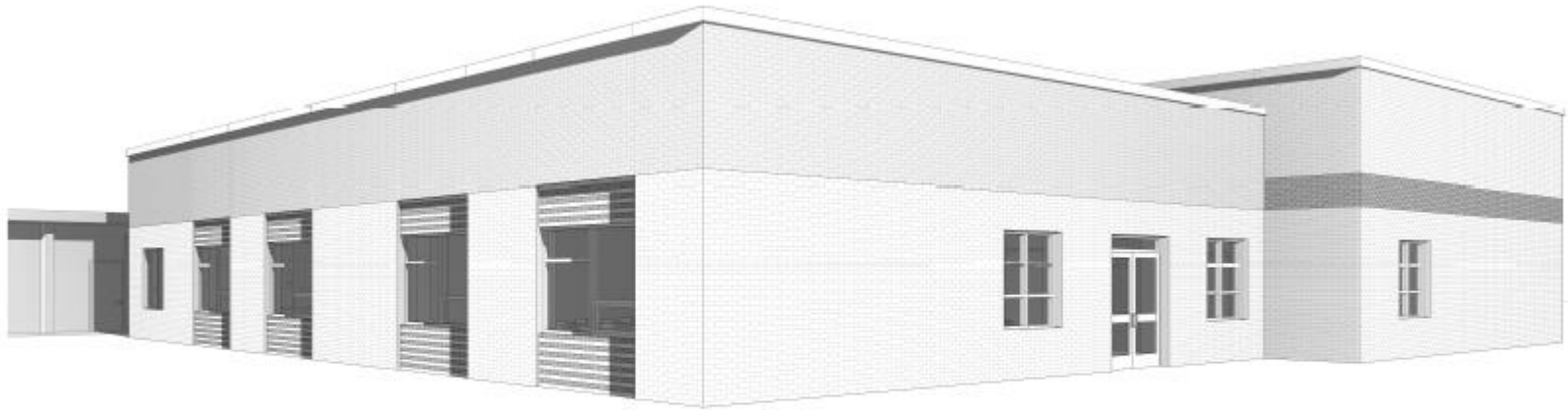
Budget  
\$4,028,106

\$444,552  
Below



# Lumberg ES – 4 CR Addition MOA – CMGC Haselden

GMP  
Negotiations



# Foster ES – 1 Story – 7 Classroom Addition Larson Incitti – Contractor TBD

Bidding 10/15

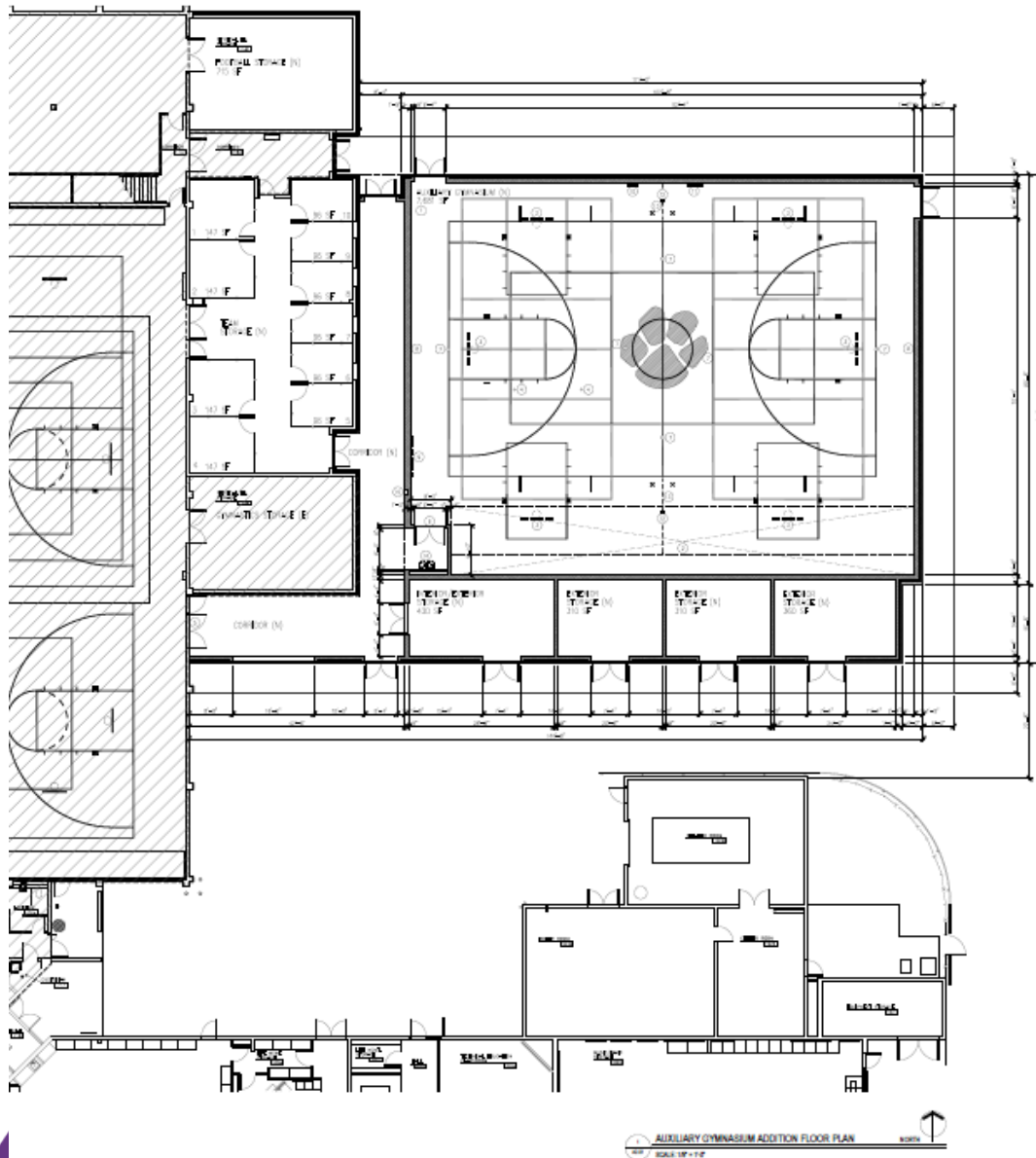


# 2021 Projects



# Pomona HS – Aux Gym Addition Sybazz – Saunders

Design  
Development



# Marshdale ES - Replacement

DAG

HCM - TBD



# Prospect Valley ES - Replacement MOA - TBD

DAG





# Ralston Valley HS Addition EUA - TBD

DAG





# Standley Lake HS - Addition Cannon -TBD

DAG



# Evergreen HS

## Efficiency Future Ready

### DLR - TBD

DAG



# D'Evelyn – Master Plan Addition & Efficiency Future Ready

DAG

HCM - TBD





# Evergreen MS - Addition AMD - TBD

DAG





# Powderhorn ES - Addition Hollis & Miller – TBD

DAG



# Chatfield HS, Dakota Ridge HS Efficiency Future Ready Cannon - TBD

Schematic  
Design



# Kullerstrand ES, Miller Special School Efficiency Future Ready Larson Incitti – TBD

Schematic  
Design





# Allendale ES, Stott ES, Vanderhoof ES Efficiency Future Ready EUA – TBD

## Schematic Design





# Carmody MS & Devinny ES

Efficiency Future Ready  
DLH - TBD

Schematic  
Design



Deane ES  
Efficiency Future Ready  
LOA - TBD

Schematic  
Design



# Maple Grove ES

## Efficiency Future Ready

### RTA - TBD

Schematic  
Design





DW Turf Fields – Alameda HS,  
D'Evelyn HS (T&F), Jefferson HS (T&F)  
Wheat Ridge HS (track + drainage)  
HCM - TBD

Schematic  
Design





# Dennison ES Efficiency Future Ready

Schematic  
Design

## Hollis & Miller- TBD



# Ryan ES & Sheridan Green ES Efficiency Future Ready

Schematic  
Design

RB+B - TBD



# Brady - Efficiency Future Ready

Construction Documents

Alan Ford - TBD





# Everitt MS & Westridge ES Efficiency Future Ready

Schematic  
Design

OZ - TBD





DW – Playgrounds –Warder ES,  
Elk Creek ES, Secrest ES, Thomson ES  
Shaeffer ES, Red Rocks ES,  
Stevens ES, Peck ES

Schematic  
Design

Design Concepts - TBD

DW Roofing – 6 Schools  
Emory ES, D'Evelyn Opt,  
Westgate ES, Stevens ES,  
Fitzmorris ES & Lawrence ES

WJE & Roof Tech - TBD

Schematic  
Design

# Lasley ES & Patterson ES Efficiency Future Ready

## Schematic Design

Treanor HL - TBD



# Kyffin ES, Fitzmorris ES & Lawrence ES

## Efficiency Future Ready

### Eidos - TBD

# Schematic Design





# Next Meeting 11/5/20

# 2018 BOND PROGRAM COMMUNICATIONS UPDATE

## CAPITAL ASSET ADVISORY COMMITTEE

### OCTOBER 2020

**COMPLETED WORK:**

- Created short site visit vignette videos to show progress of construction projects:
  - Sharing videos on social media - [Furniture Installation Updates](#)
  - Also posted as a story on Jeffco Builds website
- Produced groundbreaking at Bell Middle School (Sept. 30th)
  - Video to be produced and on Facebook Live
- Helped produce [Look What You Bought: Part Seven](#)
  - Story posted on Jeffco Builds website

**Website analytics:**

Jeffcobuilds.org and all pages with "jeffco builds" in the URL (ie sub-pages)

Jeffco Builds page performance	Page views	Unique page views
<b>August 2020</b>	2,362	2,034
<b>September 2020</b>	2,290	1,863
<b>% change</b>	3% decrease	8% decrease

**UPCOMING WORK:**

- Warren Tech South groundbreaking:
  - Oct. 7th - will be sure to send invite out to CAAC
- Jefferson H.S. groundbreaking
- Wilmot ribbon cutting
- Board site tour
- Supporting schools with communications needs:
  - Green Gables & Wayne Carle

